

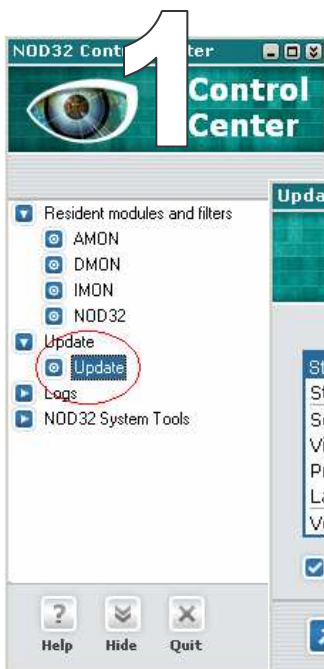
Updating your NOD 32 Licence Information

NOD 32 requires a valid username and password to operate and update correctly. Run PC Run can supply these details via email; however you will need to enter them into the NOD 32 main program. This document will show you how to do this.

Firstly, locate the NOD32 icon on the taskbar on the bottom right of your screen. This is what it looks like.



Once you have found this icon, simply double click on it to open the main NOD32 “Control Center”.

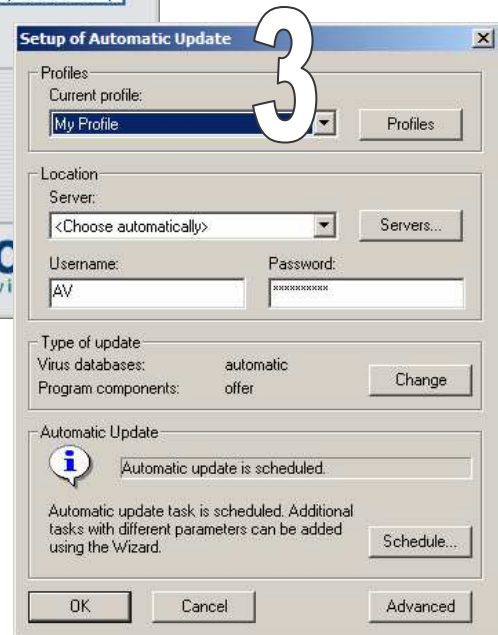


Once this opens, double click on the Update icon and select the Update submenu as highlighted in the picture 1.



The Update window (picture 2) will now appear.

Select **Setup** to display the final window as shown in picture 3.



Now you can enter your new username and password in the fields on this window. If you have your email from runpCrun open, it is advisable to copy and paste the details across to ensure no typing errors are made as the details are case sensitive.

Once you are finished, click on OK and close all the NOD32 windows by selecting the icon at the top of each window.